



UNDERSTANDING OUR EXPERTISE

Our PEOPLE

Pioneering an embrative approach to education in order to improve mental health of children and young people; to better understand behaviours and improve lifetime attainment and opportunity.

Sarah Dove is the Founder and Managing Director of Phoenix Education Consultancy. Her own experiences of adversity, drive her understanding that there needs to be a wider systems approach to drive change within the education system. She has a strong strategic background in education services within in-patient services, children's care homes, secure units, specialist resource provisions as well as mainstream education. Sarah Dove was the first person in her family to complete her GCSEs, let alone A-levels, a degree, qualified teacher status, or a masters degree. In the last fifteen years, Sarah has led education provisions to ensure every child is able to embrace rather than simply experience education. She has managed to do this whilst balancing parenthood, studying for a PHD and managing Tourette's syndrome, OCD, PTSD and depression. After attempting suicide in 2015, Sarah has a unique view of mental health services, education systems and the need for inclusion in wider communities. Sarah's view is that educators can not only change lives, they can save lives. Sarah combines her academic achievements, her own experiences of overcoming traumatic childhood experience, mental illness and the daily challenges parenthood brings with over 15 years experience of driving change in the education sector. Yet, what is most important to Sarah, and Phoenix Education Consultancy as a business is a belief in, and commitment to, every child - and a determination to ensure that we allow every child to embrace their education and flourish into their future



UNDERSTANDING EXCLUSION

The dramatic rise in the number of exclusions seen in both primary and secondary schools has become a public concern. We know that exclusions are associated with increased gang membership, serious youth violence, crime, unemployment and mental illness. Understanding the causes of exclusion allow us to implement preventative measures and provide interventions that limit the lifetime damage of being unable to thrive within mainstream education. Understanding exclusion isn't just about reducing the number of exclusions we see but also about helping understand how to create the best possible outcomes for excluded pupils.

IMPROVING ALTERNATIVES

Alternative Provisions are seen as the inferior alternative to mainstream education. The incredible work they do to support vulnerable children with complex needs is often overlooked and by using mainstream indicators of success, seem to fail rather than thrive. Yet, Pupil Referral Units and Alternative Provisions provide life changing experiences and opportunities to children and young people that need it the most. At Phoenix Education, we have developed the RISE accreditation to show excellence and equality across AP and ensure that alternative education still provides pupils with a 360 learning experience and is held in an equal regard to mainstream by society as a whole.

MANAGING MINDSET

Children and young people are experiencing stress, cognitive challenges and mental health problems more often, with greater severity and at earlier ages than than ever before. Phoenix Education Consultancy work to help mainstream schools improve their understanding of mental health and their ability to implement proactive, mentally supportive measures. We also support the schools that are faced with the most challenging children, understand how to support and improve mental illness and advise how the most unwell children are able to engage in education from hospital or other secure settings.



Our Mission

REDBRIDGE COUNCIL

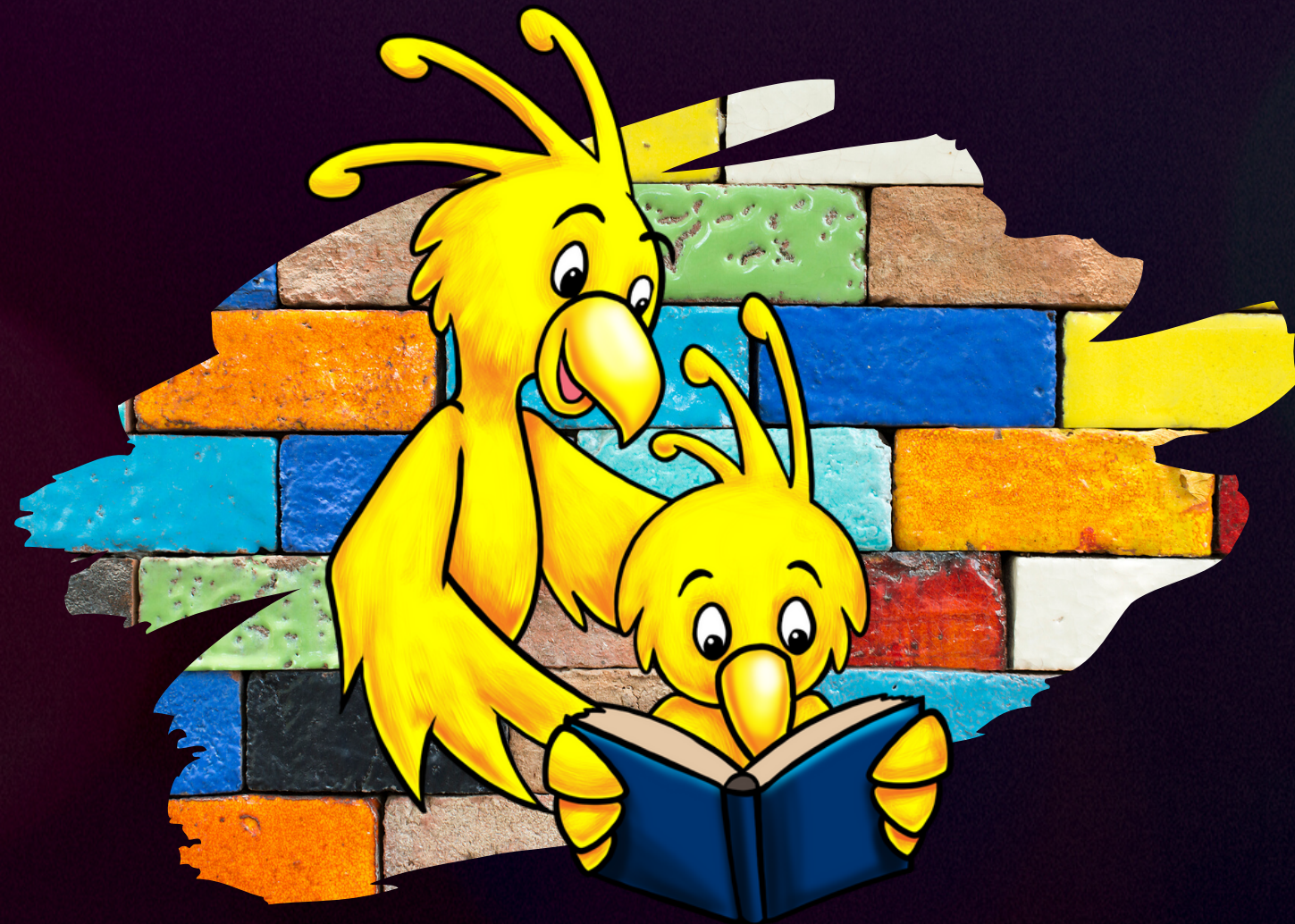
Phoenix Education Consultancy work with the London Borough of Redbridge to prevent exclusions and ensure timely and appropriate access to education within Pupil Referral Units and mainstream education in the area. Phoenix Education have provided strategic and practical support to develop and implement improved processes and systems that ensure pupils with complex needs and challenges behaviours receive a full education and experience a sense of belonging.

NO ISOLATION: AV1

Phoenix Education Consultancy has been appointed to provide strategic advice, insight and project management support to AV1, a project recently funded by the Department of Education Alternative Provision Innovation Fund. Utilising No Isolation's AV1 telepresence technology, from a hospital bed, psychiatric unit or home a young person can control their AV1 in their school environment which in turn allows them to partake in lessons from answering questions, group work and listening to the teacher. This project includes collaboration between education services such as Great Ormond Street Hospital school, mainstream schools, parents/carers and pupils to ensure that pupils can continue to access education whilst undertaking treatment.

BIRMINGHAM COUNCIL

Working closely with Youth Offending Services, Children Services and City of Birmingham School (COBS), Sarah's work is multi-faceted. Specifically supporting the development of strategic work across multi-disciplinary team for children who are at risk of or involved in criminal exploitation. Sarah Dove is working closely with COBS to develop effective pathways for children who have significant mental health difficulties complicated by permanent exclusion and lack of engagement with education services. Using the Embrative Education framework, Sarah Dove aims to provide sustainable change for children who have a long history of poor educational engagement.



OUR CLIENTS

PRUsAP

Phoenix Education Consultancy provide presidential services to PRUsAp UK to ensure that policies and practices relating to Pupil Referral Units and Alternative Provisions are fully understood by the wider government and are in turn reflect the needs of the students that we serve.

LET US COMMUNICATE

The award winning grassroots organisation based in London Borough of Newham and seeks to support local families in gaining educational support for children with special needs.

LET'S UNITE FOR AUTISM

A grassroots organisations that seeks to support the Somalian's and wider community in Shepherd's Bush to develop a deeper understanding of autism within families.



SOCIAL RESPONSIBILITY

“ Sarah recently helped us with compiling information for a Tender to secure a local authority contract. Sarah worked efficiently and showed an excellent level of professionalism and communication when offering consultancy services. Sarah has a wealth of knowledge related to current education practice and was a valuable resource in ensuring all of the information required from us from local government was current and in line with relevant legislation. Highly recommend her consultancy services and will be using again! ”

“ Sarah is totally committed to meeting the needs of our most vulnerable children. She is highly skilled in identifying needs and recommending the provision required to address them. I thoroughly recommend her to any setting that is currently finding it a challenge to make the required provision for vulnerable and marginalised young people ”

“ Sarah was a fantastic Chair for our Alternative Provision Conference. Not only was she friendly and full of enthusiasm about the topic, her contributions to the day were very astute and insightful. Sarah facilitated some very interesting discussions on the experiences of children outside of mainstream schools, in a room of over 100 delegates from a range of sectors. Despite a few last minute unforeseen changes, Sarah adapted to the situation very professionally. Very much looking forward to working with Sarah again ”

“ I worked with Sarah Dove when she was working as a teacher in charge of a psychiatric inpatient service. She is an excellent assistant head teacher and helped to provide clear leadership, and management to the school students and its staff. Sarah demonstrates the ability to engage well with young people, and support their learning and emotional needs. She also has strong communication skills in working with members of a large multi-disciplinary team, and was an extremely personable organized, and reliable colleague! ”



TESTIMONIALS



GET IN TOUCH

t: 0203 488 4389

sm: @phoenixgrpHQ

w: www.phoenixeducationconsultancy.com

e: info@phoenixeducationconsultancy.com