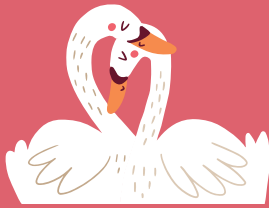


Are grown-ups always right?

Who is this resource aimed for?

For children that want explore more things about their learning preferences are want to explore this more with a grown up.



All swans are white



Zena argues that all swans are white. Zena has only ever seen white swans.

Can you list some reasons why Zena could be wrong?

1.
2.
3.
4.
5.

Bartholomew has looked at your reasons above and knows that Zena is wrong, but Bartholomew is nervous about telling Zena, can you fill in the speech bubble to help him?



The most obvious way to prove that Zena's theory is wrong is to check that every swan you have seen is white. However, you can search really hard and you can't be completely sure there isn't a black swan somewhere.

But, if you find one black swan. Even if it is only one, you know that Zena is wrong!*

*if you want to find out more about this you can research Karl Popper and 'falsification'

